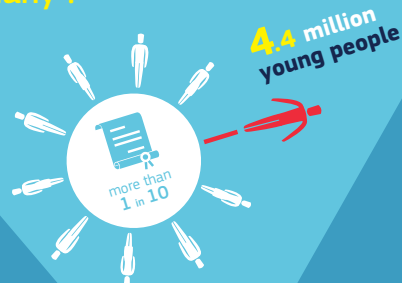




How many ?



Who are they ?

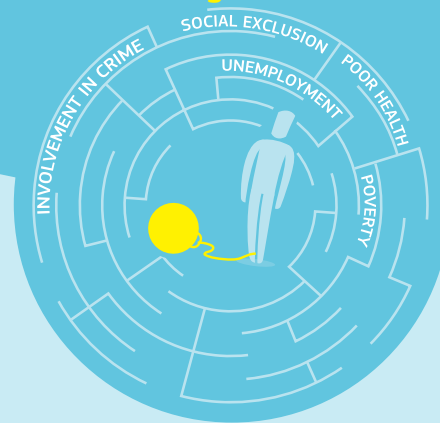
Early school leavers are young people who leave education and training with only lower secondary education, or less, and who are no longer in education and training

What causes early school leaving ?

Early school leaving has multiple and often intertwined causes. It results from a combination of personal, social, economic, educational and family-related factors



What are the consequences of early school leaving ?



EARLY SCHOOL LEAVERS

A WHOLE SCHOOL APPROACH TO REDUCE EARLY SCHOOL LEAVING

Schools cannot effectively work alone. They need to move from isolated and short-term actions to engaging in a more holistic and systemic initiatives

PUBLIC AUTHORITIES

SCHOOL HEADS

Distributed leadership
Teamwork
School improvement processes

COMMUNITY ORGANISATIONS AND BUSINESSES

Additional learning experiences
Building trust

LEARNERS

TEACHERS

High expectations for all learners
Collaborative teaching
Professional development

PARENTS AND FAMILIES

Co-educators
Participate in school life

SERVICES: HEALTH, SOCIAL, EMPLOYMENT, POLICE...

Collaboration with schools
Multi-disciplinary teams

The EU

- Monitors Member States' progress in reducing early school leaving
- Promotes cooperation and mutual learning
- Offers guidance and tools for schools
- Funds research to identify successful policies and practices
- Provides co-funding for national measures through the European Social Fund and the Erasmus+ programme

Find out more:
http://ec.europa.eu/education/policy/strategic-framework/expert-groups_en.htm#schools